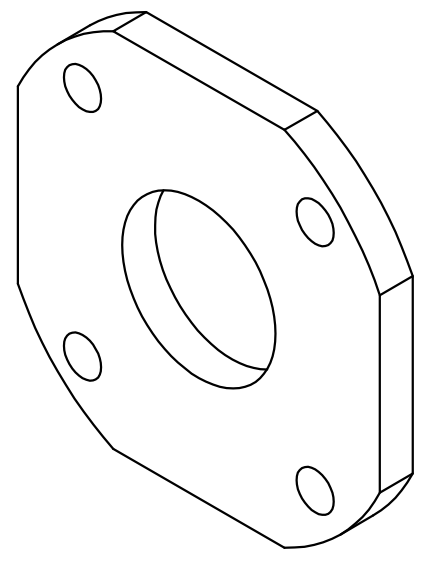
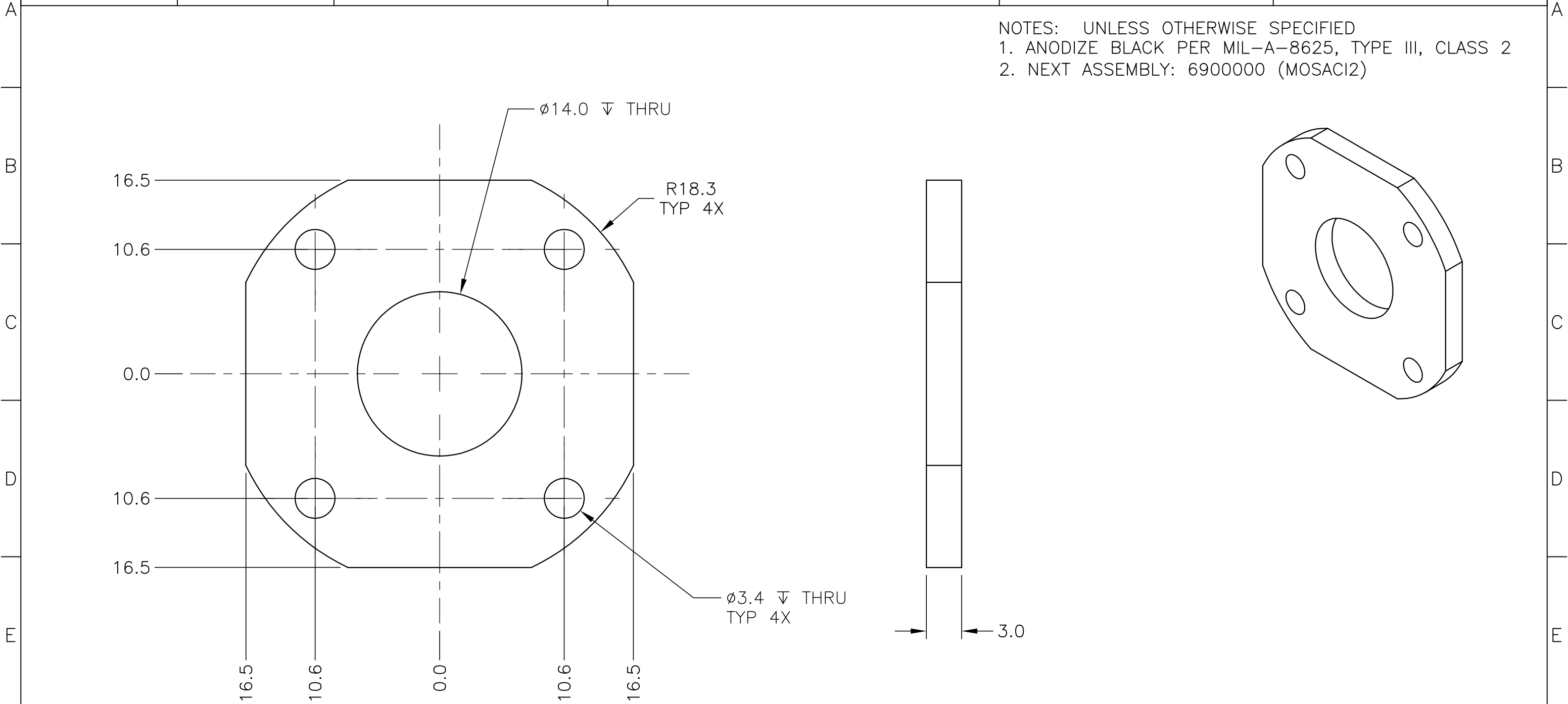


1 2 3 4 5 6 7 8 9 10

BILL OF MATERIAL

ITEM	QTY	PART NUMBER	DESCRIPTION	MATERIAL	VENDOR
1	1	6900008	BEARING RETAINING PLATE	6061-T6 ALUMINUM	

NOTES: UNLESS OTHERWISE SPECIFIED
 1. ANODIZE BLACK PER MIL-A-8625, TYPE III, CLASS 2
 2. NEXT ASSEMBLY: 6900000 (MOSAC12)



ALL DIMENSIONS IN MILLIMETERS UNLESS OTHERWISE STATED

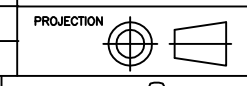
TOLERANCES	
X.	± 0.5
X.X	± 0.1
X.XX	± 0.05
X.XXX	± 0.010
ANGLE	± 0'30"
MACHINING FINISH	
N7	- 1.6µm - 63µm
EDGE BREAK	
	0.3mm x 45°

OBSERVATORIES OF THE CARNEGIE INSTITUTE OF WASHINGTON
 813 SANTA BARBARA ST.
 PASADENA, CA 91101

IMACS INAMORI MAGELLAN AREAL CAMERA AND SPECTROGRAPH

PROJECT: IMACS
 TITLE: Z FOCUS ASSEMBLY BEARING RETAINING PLATE

A		DRAFT FOR REVIEW	TSH	17 DEC 07
REVISION	ZONE	DESCRIPTION OF REVISION	BY	DATE



DESIGNED TSH DATE 17 DEC 07	DRAWN TSH DATE 17 DEC 07	CHECKED CHK DATE	SCALE 3:1	DWG. No. 6900008	REV A
--------------------------------------	-----------------------------------	------------------------	--------------	---------------------	----------

1 2 3 4 5 6 7 8 9 10 B-SHEET.dwg