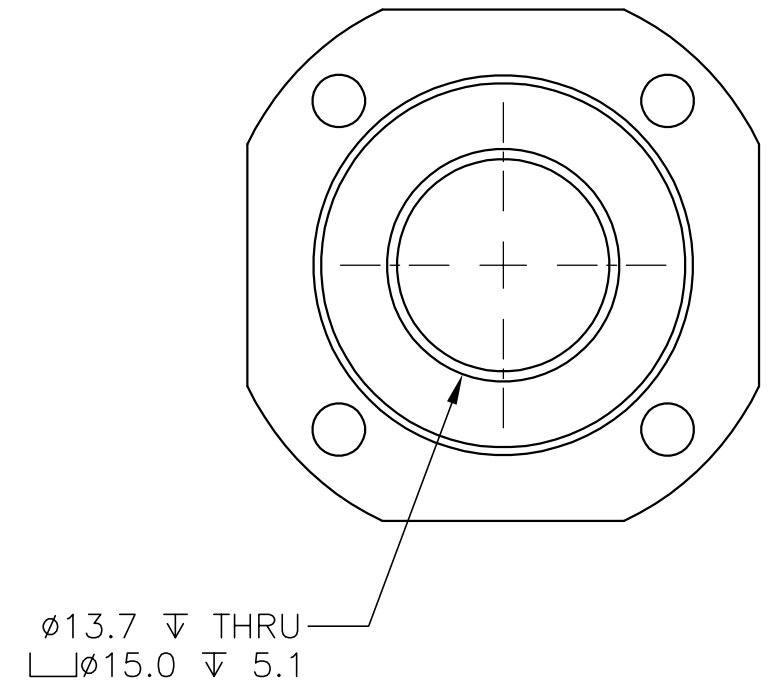
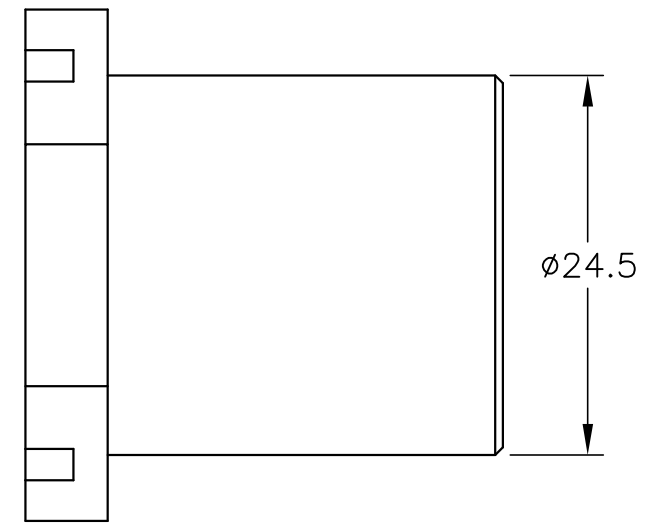
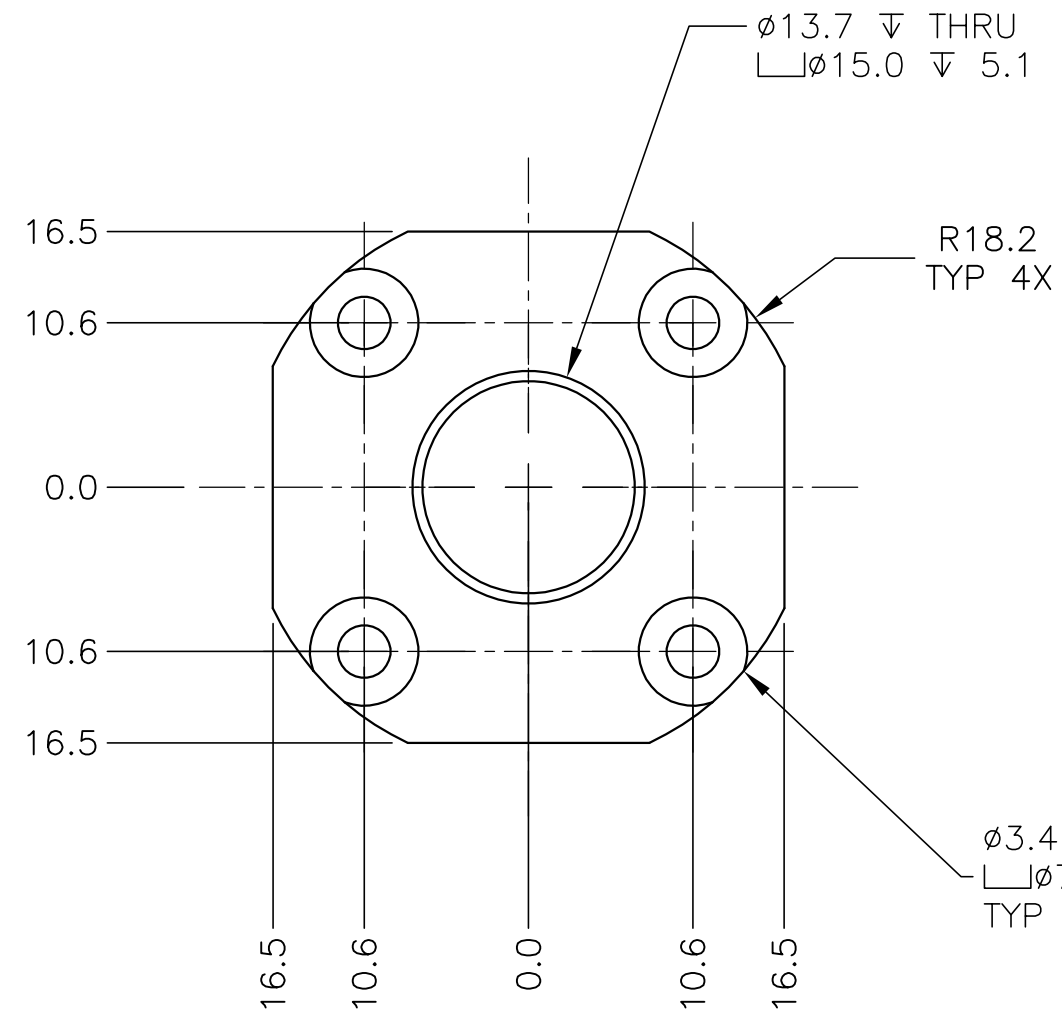
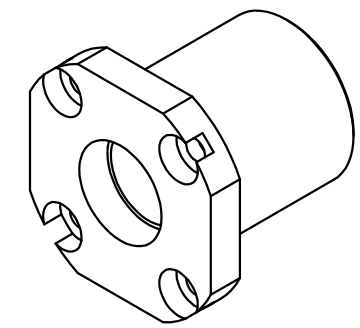


1 2 3 4 5 6 7 8 9 10

BILL OF MATERIAL

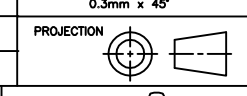
| ITEM | QTY | PART NUMBER | DESCRIPTION | MATERIAL | VENDOR |
|------|-----|-------------|-------------------------|------------------|--------|
| 1 | 1 | 6900007 | WORMSHAFT BEARING BLOCK | 6061-T6 ALUMINUM | |

NOTES: UNLESS OTHERWISE SPECIFIED
 1. ANODIZE BLACK PER MIL-A-8625, TYPE III, CLASS 2
 2. NEXT ASSEMBLY: 6900000 (MOSAC12)



| | | | | | |
|--|--|--|-----------------------------------|------------------------|--------------|
| ALL DIMENSIONS IN MILLIMETERS UNLESS OTHERWISE STATED | | OBSERVATORIES OF THE CARNEGIE INSTITUTE OF WASHINGTON 813 SANTA BARBARA ST. PASADENA, CA 91101 | | | |
| TOLERANCES X. ± 0.5 X.X ± 0.1 X.XX ± 0.05 X.XXX ± 0.010 ANGLE ± 0'30" | | PROJECT IMACS | | | |
| MACHINING FINISH N7 - 1.6µm - 63µin | | TITLE Z FOCUS ASSEMBLY WORMSHAFT BEARING BLOCK | | | |
| EDGE BREAK 0.3mm x 45° | | DESIGNED TSH DATE 17 DEC 07 | DRAWN TSH DATE 17 DEC 07 | CHECKED CHK DATE | SCALE 3:1 |
| DWG. No. 6900007 | | REV A | | | |

| REVISION | ZONE | DESCRIPTION OF REVISION | BY | DATE |
|----------|------|-------------------------|-----|-----------|
| A | | DRAFT FOR REVIEW | TSH | 17 DEC 07 |



1 2 3 4 5 6 7 8 9 10 B-SHEET.dwg