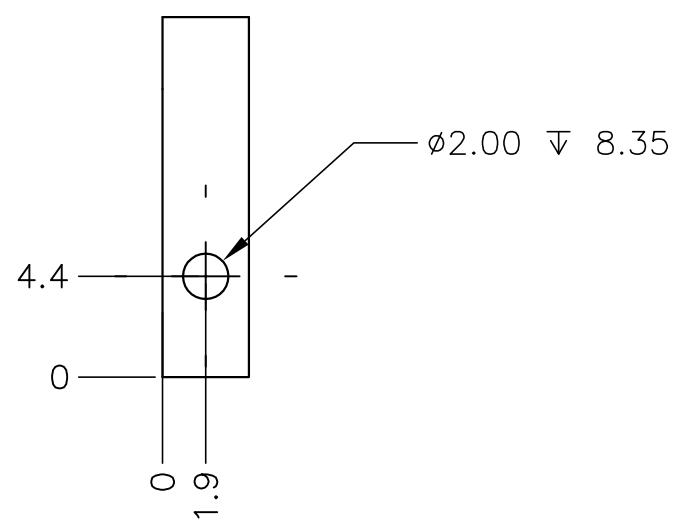
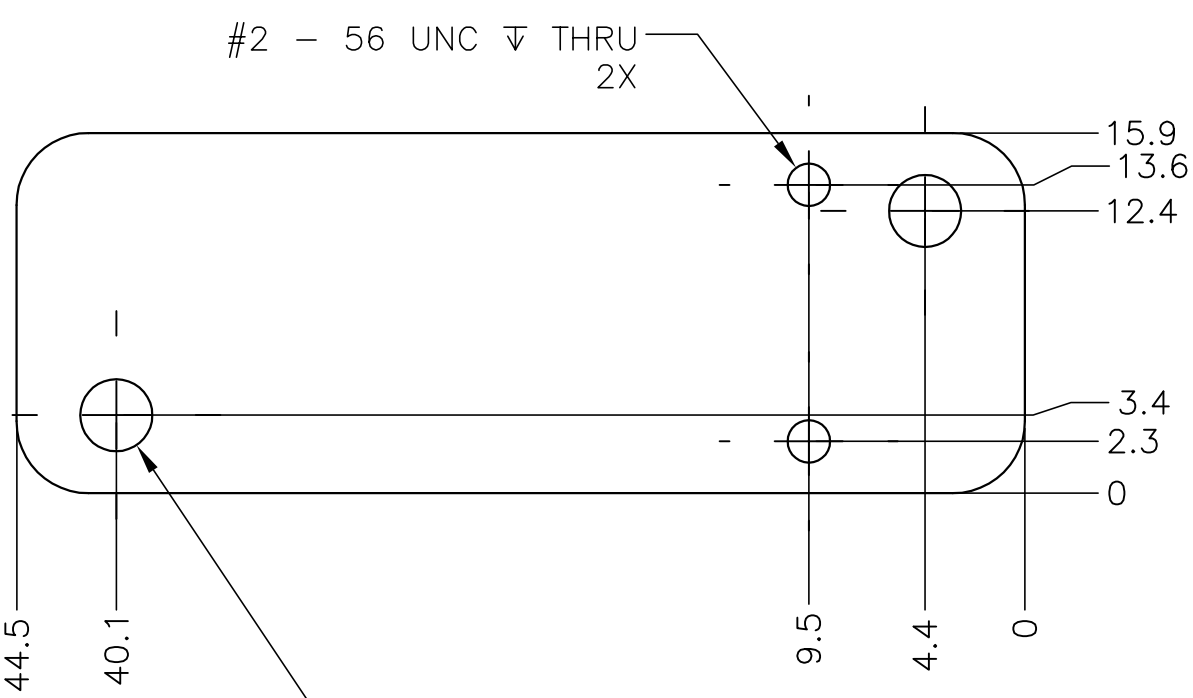
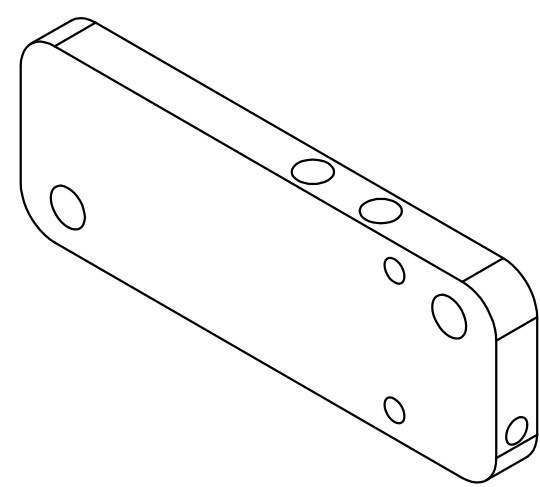
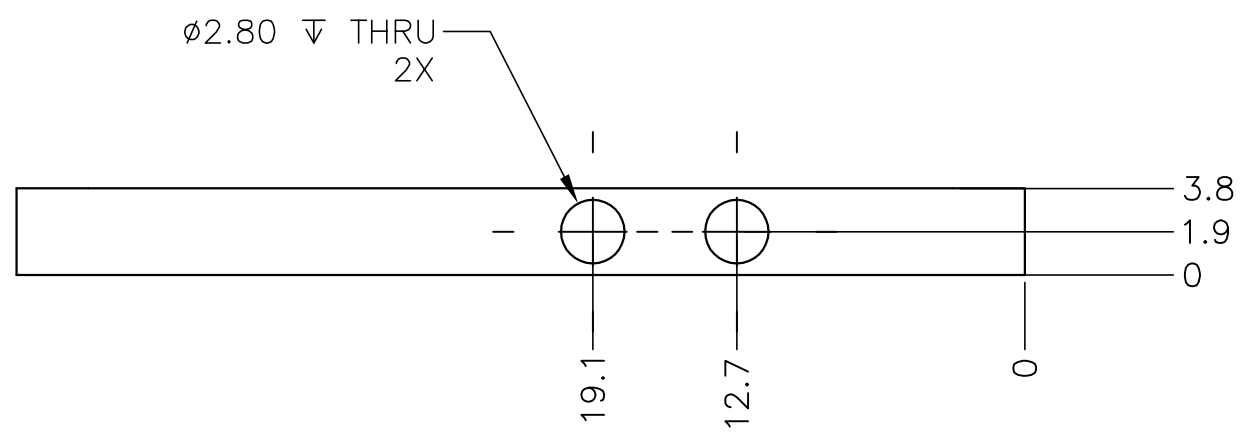


1 2 3 4 5 6 7 8 9 10

BILL OF MATERIAL					
ITEM	QTY	PART NUMBER	DESCRIPTION	MATERIAL	VENDOR
1	8	6831001	TEMPRATURE SENSOR PLATE	6061 T6 ALUMINUM	

NOTES: UNLESS OTHERWISE SPECIFIED
 1. NEXT ASSEMBLY: 6831000 (MOSAIC2)



ALL DIMENSIONS IN MILLIMETERS UNLESS OTHERWISE STATED	
TOLERANCES	
X.	± 0.5
X.X	± 0.1
X.XX	± 0.05
X.XXX	± 0.010
ANGLE	± 0'30"
MACHINING FINISH	
N7 - 1.6µm - 63µm	
EDGE BREAK	
0.3mm x 45°	

OBSERVATORIES OF THE CARNEGIE INSTITUTE OF WASHINGTON
 813 SANTA BARBARA ST.
 PASADENA, CA 91101

IMACS INAMORI MAGELLAN AREAL CAMERA AND SPECTROGRAPH

PROJECT	IMACS
TITLE	MOSAIC2 FOCAL PLANE ASSEMBLY TEMP SENSOR PLATE
DESIGNED	TSH
DATE	01 SEPT 07
DRAWN	TSH
DATE	19 NOV 07
CHECKED	CHK
DATE	DATE
SCALE	1/1
DWG. No.	6831001
REV	A

A		DRAFT FOR REVIEW	TSH	19 NOV 07
REVISION	ZONE	DESCRIPTION OF REVISION	BY	DATE



A A

B B

C C

D D

E E

F F

1 2 3 4 5 6 7 8 9 10 B-SHEET.dwg