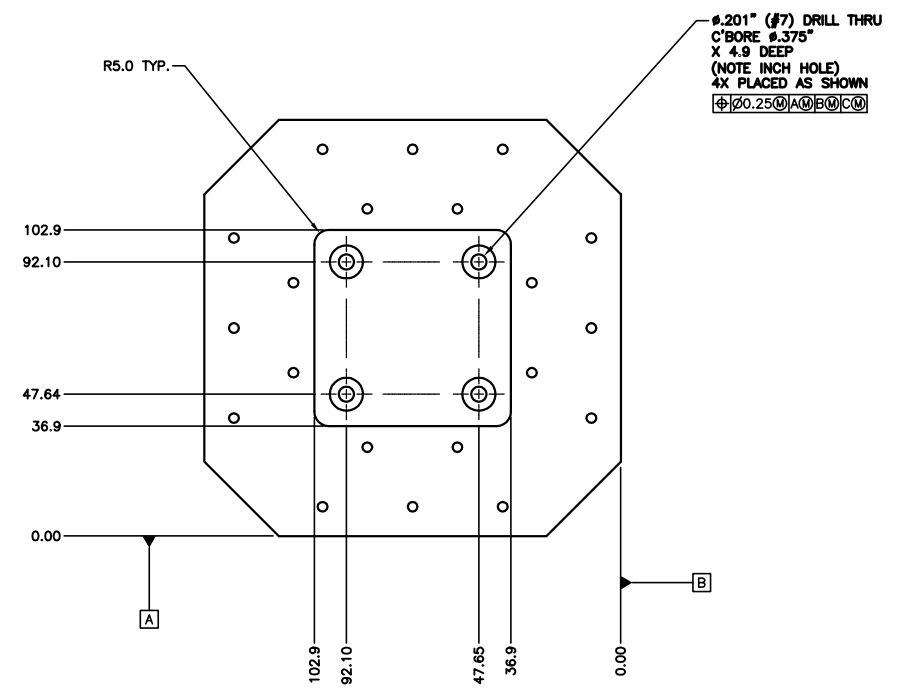
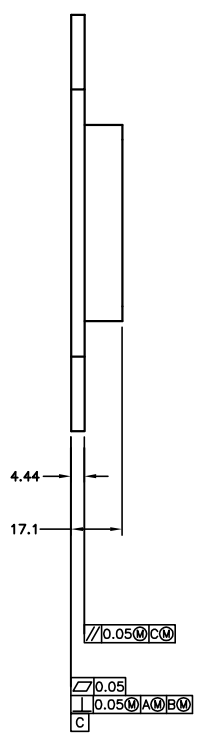
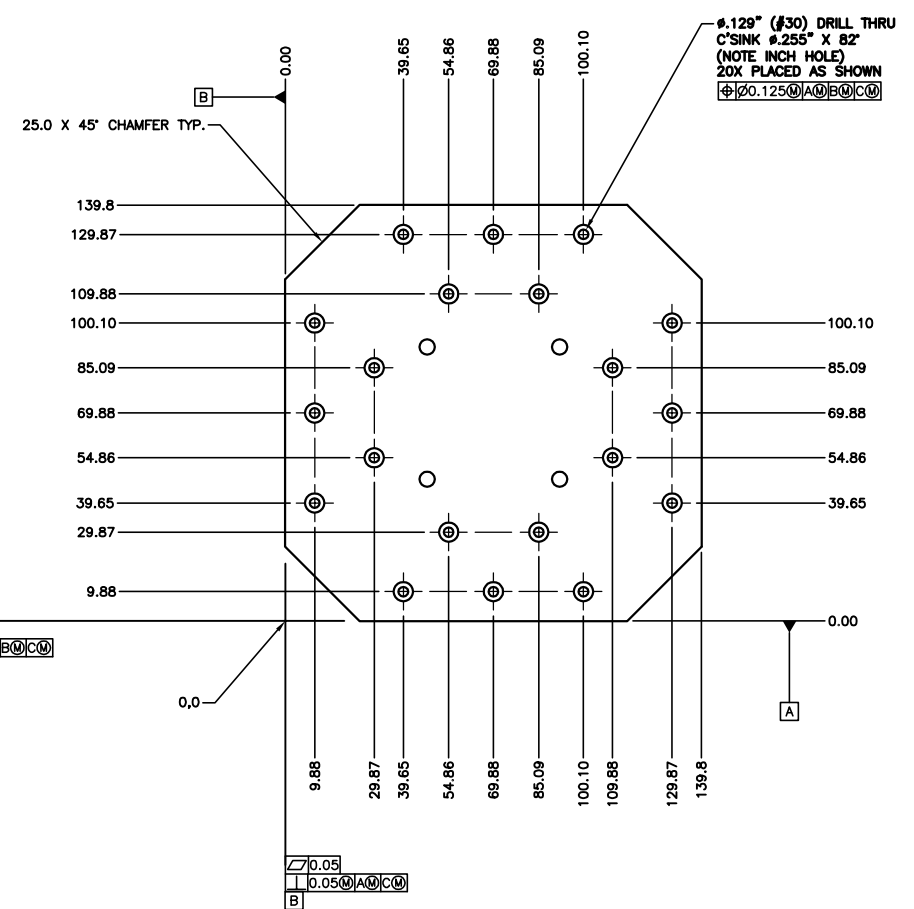
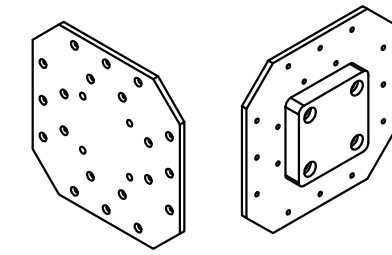


BILL OF MATERIAL					
ITEM	QTY	PART NUMBER	DESCRIPTION	MATERIAL	VENDOR
1	1	6810005	CCD TO Z-FLEXURE ADAPTER PLATE	6061 T-6 ALUMINUM	

NOTES: UNLESS OTHERWISE SPECIFIED
1. NEXT ASSEMBLY: 6810000 (MOSAIC2)



REVISION	ZONE	DESCRIPTION OF REVISION	BY	DATE
A		REVIEWED AND ISSUED	BCB	06/12/03

IN MILLIMETERS UNLESS OTHERWISE NOTED TOLERANCES XX ± 0.1 XXX ± 0.05 XXXX ± 0.010 HOLE ± 0.02		OBSERVATORIES OF THE CARNEGIE INSTITUTE OF WASHINGTON 813 SANTA BARBARA ST. PASADENA, CA 91101 INAMORI MAGELLAN AREAL CAMERA AND SPECTROGRAPH	
MACHINING FINISH H7 - 1.6um - 6.3um EDGE BREAK 0.3mm x 45°		PROJECT IMACS DEWAR (MOSAIC2) TITLE FOCALPLANE SUBASSEMBLY CCD TO Z-FLEXURE ADAPTER PLATE	
PROJECTION 	DATE 06/12/03	SCALE 1/1	Dwg. No. 6810005 REV A