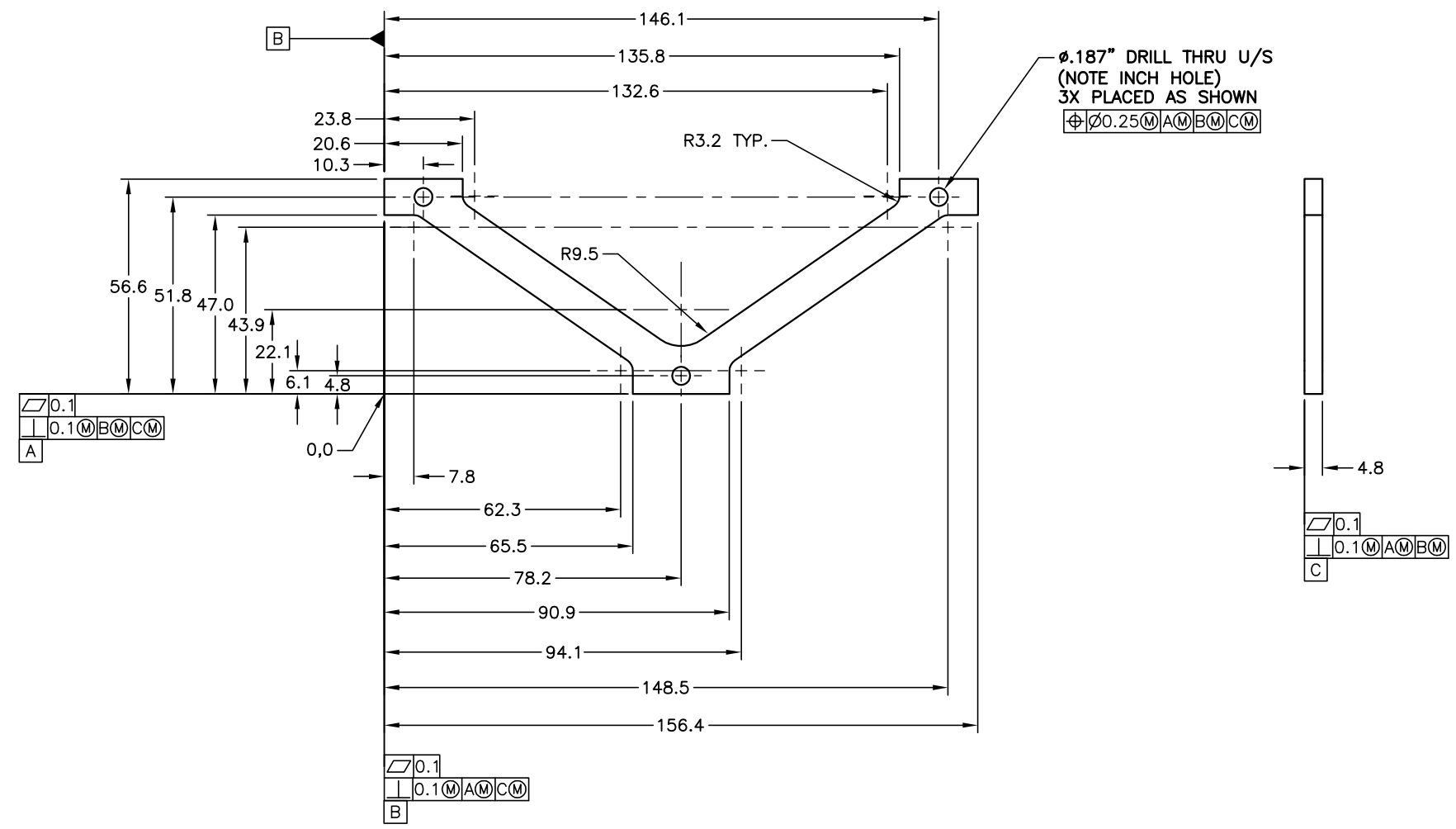
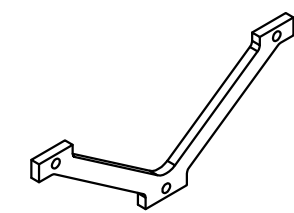


1 2 3 4 5 6 7 8

BILL OF MATERIAL					
ITEM	QTY	PART NUMBER	DESCRIPTION	MATERIAL	VENDOR
1	4	6810002	TRUSS	G-10 FIBERGLASS	

NOTES: UNLESS OTHERWISE SPECIFIED  
1. NEXT ASSEMBLY: 6810000



A		REVIEWED AND ISSUED	BCB	06/11/03
REVISION	ZONE	DESCRIPTION OF REVISION	BY	DATE

IN MILLIMETERS UNLESS OTHERWISE SPECIFIED TOLERANCES: F. ± 0.5 M. ± 0.1 H. ± 0.05 L. ± 0.02 K. ± 0.010 ANGLE ± 0°30'	OBSERVATORIES OF THE CARNEGIE INSTITUTE OF WASHINGTON 813 SANTA BARBARA ST. PASADENA, CA 91101 INAMORI MAGELLAN AREAL CAMERA AND SPECTROGRAPH
MACHINING FINISH: H7 - 1.0µm - 0.3µm EDGE BREAK: 0.3mm x 45°	PROJECT: IMACS DEWAR TITLE: FOCALPLANE SUBASSEMBLY CCD TRUSS
PROJECTION: 	SCALE: 1/1 DWA. NO.: 6810002 REV: A

1 2 3 4 5 6 7 8