

Siemens Energy & Automation, Inc.  
Bellefontaine, Ohio 43311 U.S.A.

## Installation Instructions



### DANGER

**Hazardous Voltage.**  
Will cause severe injury or death.

**Turn off and lock out all power before installing or servicing.**



### SAFETY INSTRUCTIONS

NOTE: This instruction outlines the recommended installation procedure.

#### 1. General Product Information

The ED frame circuit breaker line includes Types ED2, ED2Y, ED4, ED6, HED4 and HED6 Circuit Breakers; Type ED6 ETI Motor Circuit Interrupters; and Types ED2, ED4 and ED6 Molded Case Switches. These devices are rated 15A. to 125A. continuous current and are available for use at operating voltages up to 600 V.A.C., 50/60 Hz.; 240 V.A.C., 400 Hz.; and 250 V.D.C. (Type ED2 and ED2Y Circuit Breakers and Molded Case switches are rated 100 A. maximum.)

NOTE: Molded Case Switches are available as 100 A. and 125 A. ratings only, and are not provided with a "Push-to-Trip" button. In addition, Type ED6 ETI Motor Circuit Interrupters are available with ratings down to 1 A.

For this publication, the term Circuit Breaker also includes Molded Case Switches and Motor Circuit Interrupters.

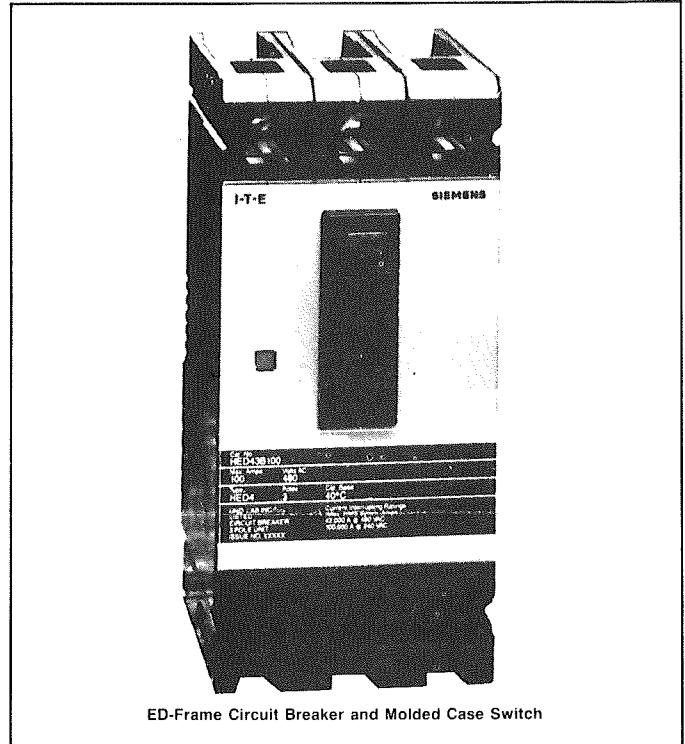
#### 2. Installation

ED-frame circuit breakers are for use in individual enclosures, panelboards, switch boards or other approved equipment.

The installation procedure consists of inspecting, attaching required accessories, mounting the circuit breaker, and connecting and torquing the line and load wire connectors.

Mounting hardware and wire connectors (where required) are available as separate catalog items.

NOTE: Accessory installation must be completed before the circuit breaker is mounted and connected. (see installation instructions supplied with accessory before proceeding).

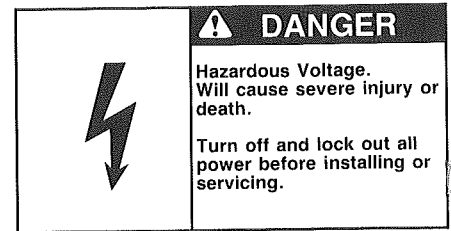


ED-Frame Circuit Breaker and Molded Case Switch

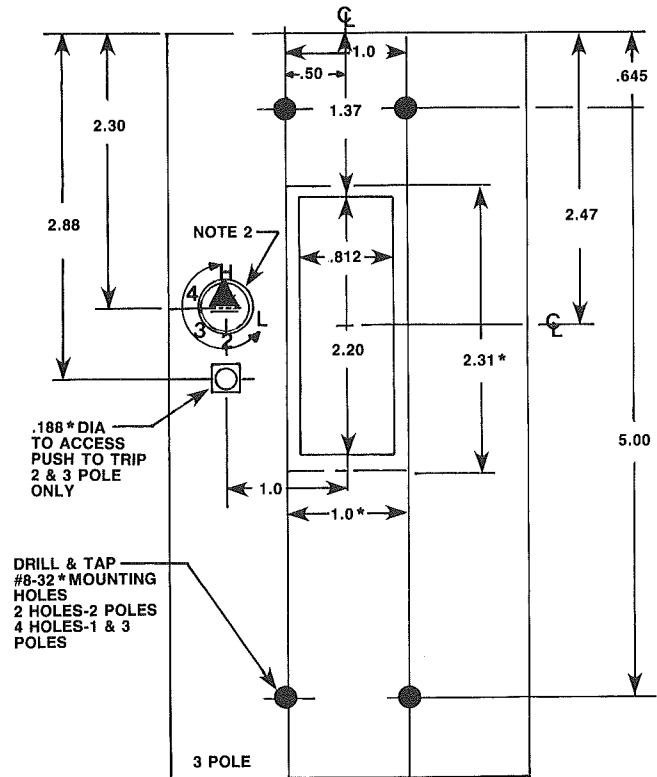
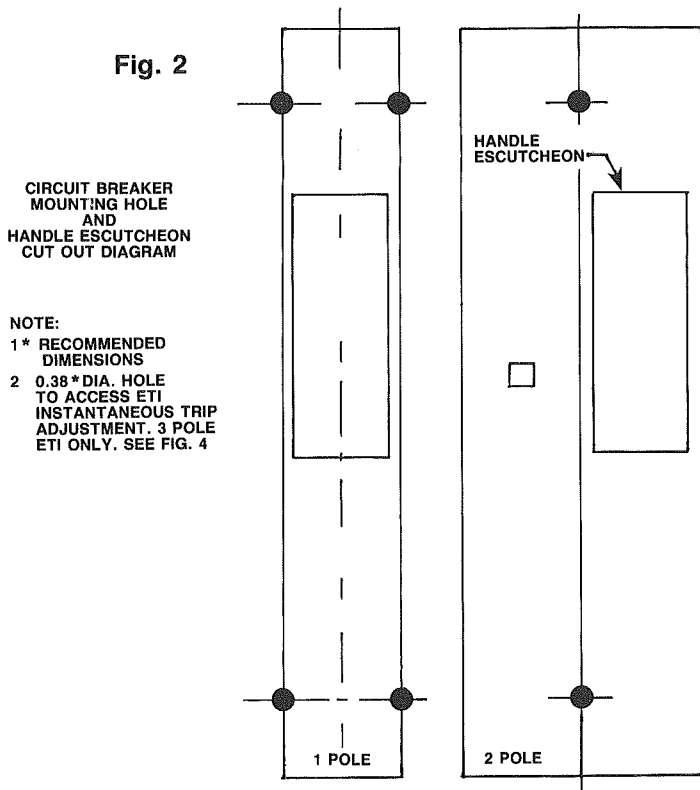
Fig. 1

#### Installation (con't)

- A. Turn off and lock out all power before installing or servicing.
- B. Make sure that the circuit breaker is suitable for the installation by comparing nameplate ratings with system requirements. Inspect the circuit breaker for completeness and check for any damage before mounting.
- C. The circuit breaker must be in the "Tripped" or "OFF" position prior to mounting.



# Installation Instructions



D. To mount the circuit breaker, perform the following steps:

1. For individual enclosures, panelboards and switchboards manufactured by Siemens Energy and Automation, Inc., follow the instructions provided with this equipment.
2. For those applications where mounting is on a flat surface of the customers equipment, drill and tap mounting bolt holes according to the drilling plan in Fig. 2. For handle escutcheon cut out plans refer to Fig. 2.

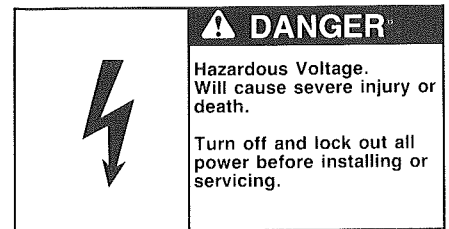
NOTE: For mounting single pole breakers, the use of a back mounting plate (Catalog Number E2BMB) is required.

3. If circuit breaker contains accessories, make sure terminals can be connected when the circuit breaker is mounted.

4. Position circuit breaker on mounting surface.
5. Install mounting screws and washers from kit Catalog Number MSE6. Torque mounting hardware to 12-15 in-lbs.
6. After mounting the circuit breaker, line and load terminals and accessory terminals should be connected. Install wire connectors with correct torque requirements. Torque values for line and load connectors are provided on the circuit breaker nameplate. Insure that wire and wire connectors are fully engaged on terminals and that connectors are flush with end of terminal.

NOTE: When aluminum conductors are used, the application of a suitable joint compound is recommended to reduce the possibility of terminal overheating.

7. After the circuit breaker is installed, check all mounting hardware for secureness.



# Installation Instructions

## 3. Manual Operation

Manual operation of the circuit breaker is controlled by the circuit breaker handle and the PUSH-TO-TRIP button. The circuit breaker handle has three indicating positions, two of which are molded into the handle to indicate ON and OFF. The third position indicates a TRIP position and is between the ON and OFF position. (See Fig. 3)

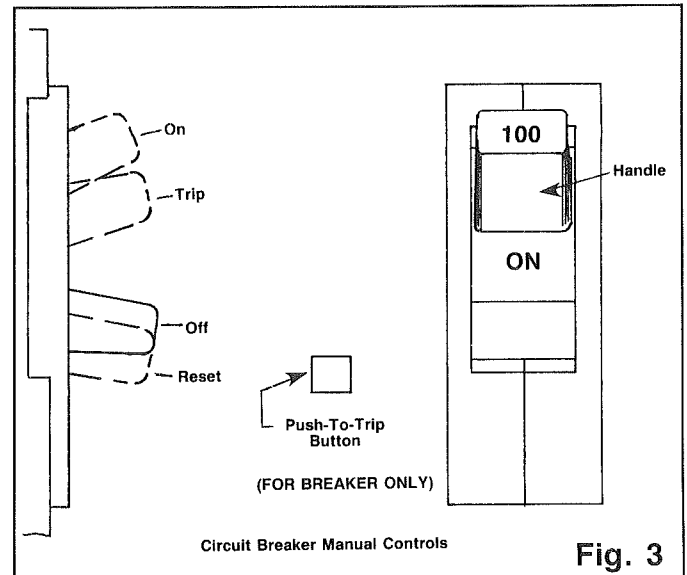
### A. Circuit Breaker Reset

After tripping, the circuit breaker is reset by moving the circuit breaker handle to the reset position and then moving the handle to the ON position.

NOTE: In the event of a thermal trip, the circuit breaker cannot be reset until the thermal element cools.

### B. PUSH-TO-TRIP Button

The PUSH-TO-TRIP button checks the tripping function and is used to manually exercise the operating mechanism. (PUSH-TO-TRIP button not provided on switch)



## 4. Inspection and Field Testing

ED-frame circuit breakers are designed to provide years of maintenance free service. The following procedure outlines how to inspect and test a circuit breaker in service.

### Inspection and Maintenance

Circuit breakers in service should be inspected periodically. The inspection should include the following steps:

A. Turn off and lock out power before inspecting or servicing. Special attention should be paid to reverse feed applications to ensure no voltage is present.

B. Remove dust, dirt, soot, grease or moisture from the surface of the circuit breaker using a lint free cloth brush or vacuum cleaner. DO NOT blow debris into the circuit breakers. If contamination is found, eliminate the source of the problem.

NOTE: Do not spray or allow any petroleum based chemicals, solvents or paints to contact the inside or outside of breaker or electrical connections.

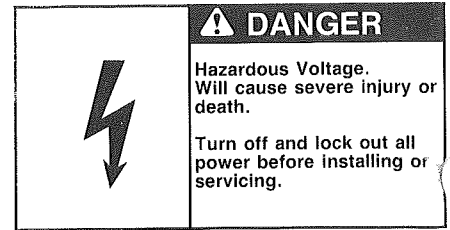
C. Switch the circuit breaker to the ON and OFF positions several times to be sure the mechanical linkages are free and do not bind. If mechanical linkages are not free, replace the circuit breaker.

D. Press the PUSH-TO-TRIP button to mechanically trip the circuit breaker. Trip, reset, and switch the breaker on several times. If the circuit breaker cannot be turned on replace the circuit breaker.

E. Check circuit breaker housing and handle for cracks, chipping and discoloration. Circuit breakers should be replaced if cracks or severe discoloration is found.

F. Check terminals and wire connectors for looseness or signs of overheating. Overheating will show as discoloration, melting or blistering of conductor insulation, or as pitting or melting of conductor surfaces due to arcing. If there is no evidence of overheating or looseness, do not disturb or tighten the connections. If there is evidence of overheating, terminations should be replaced. Before re-energizing the circuit breaker, all wire connectors and cable should be refurbished to the original installed condition.

**IMPORTANT:** Refer to instructions on page 2, Item 6.



## Installation Instructions

G. Check circuit breaker mounting hardware. Tighten if necessary.

H. Check area where circuit breaker is installed for any safety hazards, including personal safety and fire hazards. Exposure to certain types of chemicals can cause deterioration of electrical connections.

### Field Testing

Any field testing should be conducted in accordance with NEMA Standards Publication AB2.

### 5. Adjustment procedures for ETI Motor Circuit Interrupter.

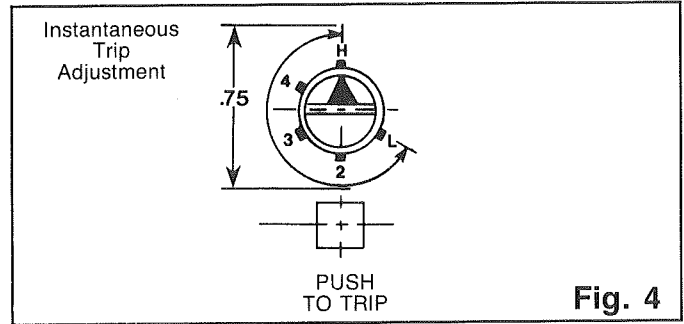
A. Determine the Motor Full Load Amperes from the motor nameplate or table 430-150 of N.E.C. (1990).

B. Use Table 1 for suggested device catalog number and adjustment setting.

C. Adjust the instantaneous button by rotating to the desired setting determined above (Ref. Fig. 4).

ETI instantaneous-trip circuit breakers are recommended for use in combination motor starters to provide selective short-circuit protection for the motor branch circuit. The adjustable instantaneous-trip feature of the ETI circuit breaker provides for a trip setting slightly above the peak motor-inrush current. With this setting, no delay is introduced in opening the circuit when a fault occurs. This circuit breaker has no time-delay trip element. Therefore it must be used in conjunction with, and immediately ahead of, the motor-running overcurrent protective device.

The recommended ETI instantaneous only circuit breakers listed in Table 1 have continuous-current ratings of at least 115% of motor full-load currents. The trip-setting positions are approximately 11 times motor full-load currents. The suggested trip settings, and, in some cases, the allowable maximum setting of 1300% of motor full load current may not be sufficient to get "energy efficient" motors on line.



(When Breaker is Mounted Immediately Ahead of Motor Starter)

3 Phase Induction Type Motors (ETI circuit breakers for branch circuit use with alternating-current combination, full voltage motor starters).

TABLE 1

| Motor Full Load Amperes | Catalog Number | ETI Trip Setting |         |
|-------------------------|----------------|------------------|---------|
|                         |                | Adjustment       | Amperes |
| .20— .33                | ED63A001       | Low              | 2.6     |
| .34— .45                |                | 2                | 4.5     |
| .46— .56                |                | 3                | 6       |
| .57— .68                |                | 4                | 7.5     |
| .69— .81                |                | High             | 9       |
| .53— .83                | ED63A002       | Low              | 7       |
| .84— 1.14               |                | 2                | 11      |
| 1.15— 1.45              |                | 3                | 15      |
| 1.46— 1.88              |                | 4                | 19      |
| 1.69— 2.00              | High           | 22               |         |
| .76— 1.29               | ED63A003       | Low              | 10      |
| 1.30— 1.75              |                | 2                | 17      |
| 1.76— 2.29              |                | 3                | 23      |
| 2.30— 2.68              |                | 4                | 30      |
| 2.69— 3.18              |                | High             | 35      |
| 1.23— 1.99              | ED63A005       | Low              | 16      |
| 2.00— 2.75              |                | 2                | 26      |
| 2.76— 3.52              |                | 3                | 36      |
| 3.53— 4.14              |                | 4                | 46      |
| 4.15— 4.90              | High           | 54               |         |
| 2.30— 3.83              | ED63A010       | Low              | 30      |
| 3.84— 5.37              |                | 2                | 50      |
| 5.38— 6.52              |                | 3                | 70      |
| 6.53— 7.68              |                | 4                | 85      |
| 7.69— 9.10              | High           | 100              |         |
| 4.23— 6.91              | ED63A025       | Low              | 55      |
| 6.92— 9.61              |                | 2                | 90      |
| 9.62— 11.91             |                | 3                | 125     |
| 11.92— 13.83            |                | 4                | 155     |
| 13.84— 16.40            | High           | 180              |         |
| 6.15— 10.37             | ED63A030       | Low              | 80      |
| 10.38— 14.22            |                | 2                | 135     |
| 14.23— 18.06            |                | 3                | 185     |
| 18.07— 20.75            |                | 4                | 235     |
| 20.76— 24.50            | High           | 270              |         |
| 8.84— 14.22             | ED63A040       | Low              | 115     |
| 14.23— 19.60            |                | 2                | 185     |
| 19.61— 24.99            |                | 3                | 255     |
| 25.00— 28.83            |                | 4                | 325     |
| 28.84— 34.00            | High           | 375              |         |
| 13.84— 23.06            | ED63A050       | Low              | 180     |
| 23.07— 31.52            |                | 2                | 300     |
| 31.53— 39.98            |                | 3                | 410     |
| 40.00— 46.14            |                | 4                | 520     |
| 46.15— 54.50            | High           | 600              |         |
| 24.23— 41.52            | ED63A100       | Low              | 315     |
| 41.53— 56.91            |                | 2                | 540     |
| 56.92— 68.45            |                | 3                | 740     |
| 68.46— 76.91            |                | 4                | 890     |
| 76.92— 90.90            | High           | 1000             |         |
| 38.46— 55.37            | ED63A125       | Low              | 500     |
| 55.38— 70.75            |                | 2                | 720     |
| 70.76— 84.60            |                | 3                | 920     |
| 84.61— 96.14            |                | 4                | 1100    |
| 96.15— 113.60           | High           | 1250             |         |

# SIEMENS



Siemens Energy & Automation, Inc.  
Bellefontaine, Ohio 43311 U.S.A.

© Siemens Energy & Automation, Inc. 1989

Item: ED2-HPL PADLOCKING  
DEVICE

For Use With: I-T-E® E & ED  
FRAME CIRCUIT BREAKERS  
& MOLDED CASE SWITCHES  
(See Types Below)

Page: 1 of 1

Pc. No. 73817 Rev.

## Installation Instructions



### **⚠ DANGER**

**Hazardous Voltage.  
Will cause severe injury or death.  
Turn power off supplying device  
before installing.**



### **SAFETY INSTRUCTIONS**

Breaker Types: E2(A), (H)E4(-A), (H)E6(-A)(ETI), CLE(-A)(ETI), ED2(Y), (H)ED4,  
(H)ED6(ETI), CED6(ETI)

1. Turn power off supplying breaker before installing kit.
2. Turn breaker handle to off position before installing padlocking device.
3. Install device by slipping over breaker handle as shown and place tab **A** into slot **B**, push tab **C** into slot **D**, and then tighten screws **E**.
4. Remove tag and wire from device.

