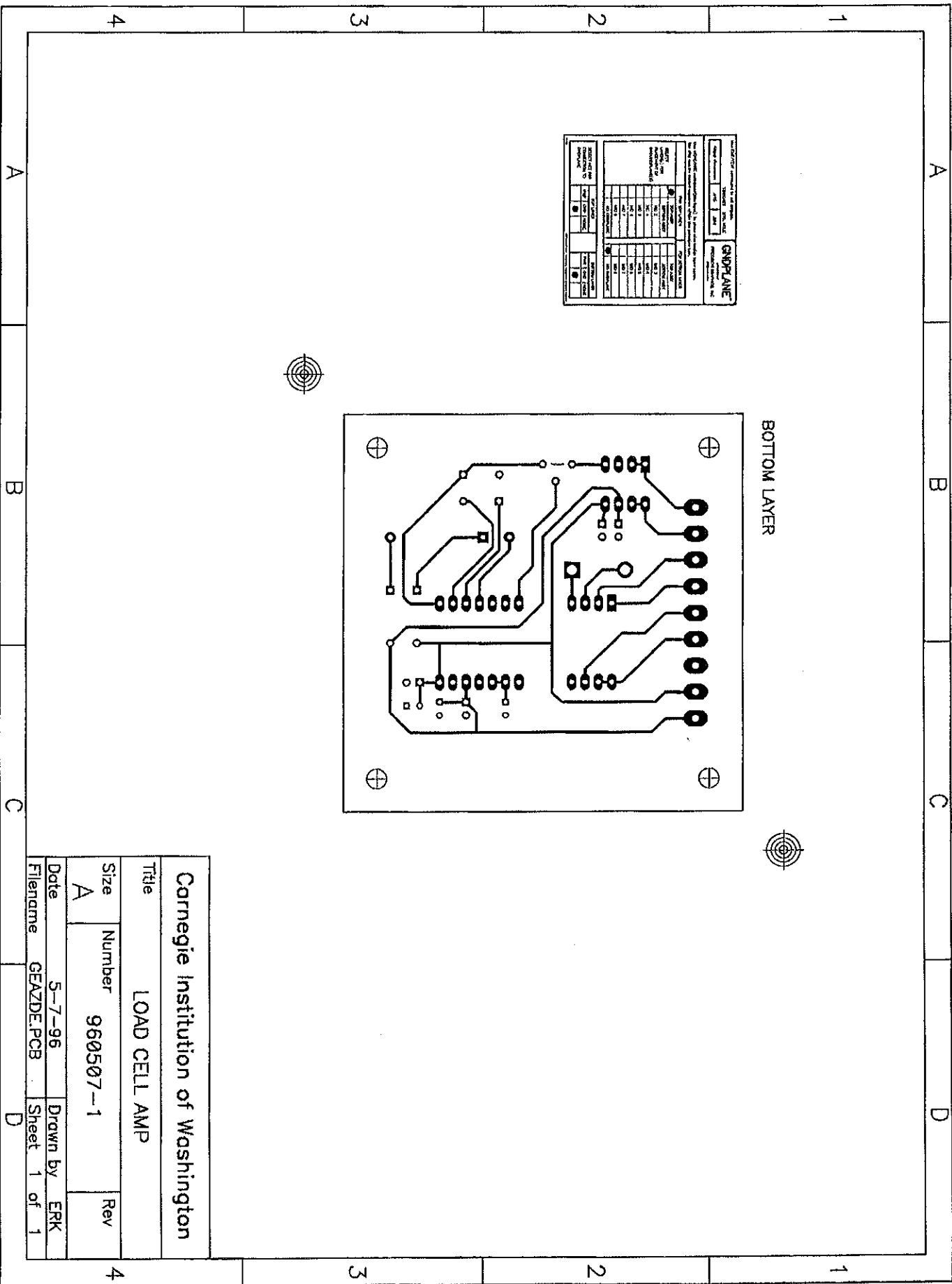


GNDPLANE	
TYPE	DRILL
DATE	5/7/96
BY	ERK
HOLE COUNTS BY HOLE SIZE HOLE SIZE (IN) COUNT 0.028 6 0.038 52 0.050 9 0.075 2 0.150 4	

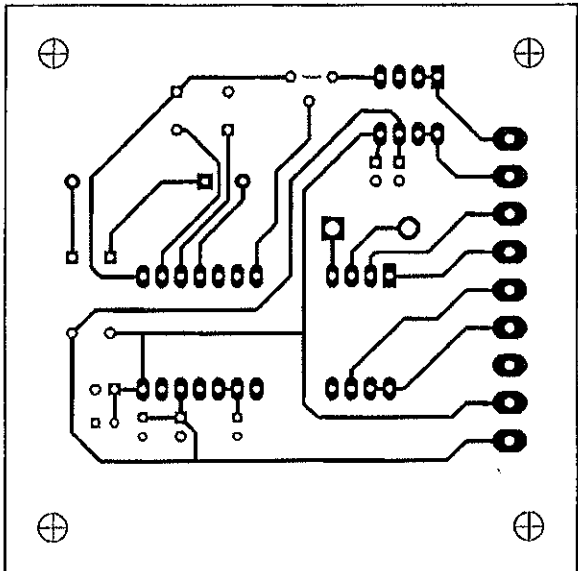
Drill Symbols	
SYM	COUNT
+	6
X	52
Y	9
T	2
Z	4

- 8) HOLE DIMENSIONS AFTER PLATING
 - 7) SILKSCREEN COMPONENT SIDE WITH WHITE EPOXY INK.
 - 6) ALL PLATED-THRU HOLES SHALL BE PLATED WITH A MIN. OF 0.001 IN.
 - 5) ALL COPPER TO BE ELECTRO-DEPOSITED TIN-LEAD
 - 4) SOLDER MASK BOTH SIDES.
 - 3) FRONT AND BACK REGISTRATION WITHIN 0.005 IN.
 - 2) 1 OZ. COPPER TOP AND BOTTOM LAYER
 - 1) MATERIAL FR-4 GLASS EPOXY 0.062 IN.
- NOTES:



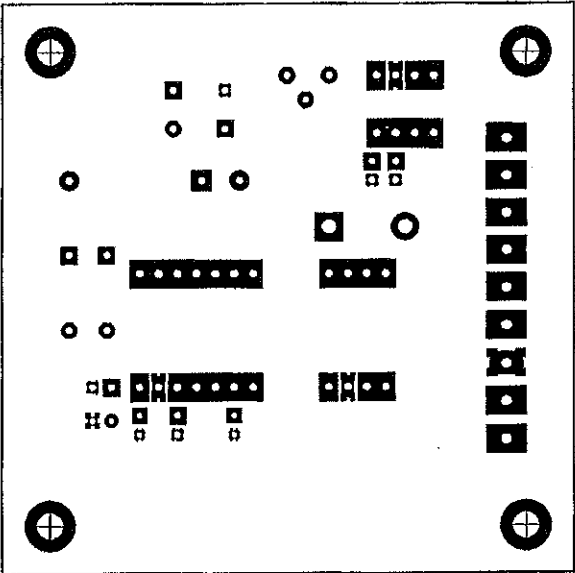
MANUFACTURER'S LABEL

DATE	1996	REV	1
DESIGNED BY	GNDP/ANF		
CHECKED BY	GNDP/ANF		
DATE	1996	REV	1
DESIGNED BY	GNDP/ANF		
CHECKED BY	GNDP/ANF		
DATE	1996	REV	1
DESIGNED BY	GNDP/ANF		
CHECKED BY	GNDP/ANF		
DATE	1996	REV	1
DESIGNED BY	GNDP/ANF		
CHECKED BY	GNDP/ANF		



Carnegie Institution of Washington			
Title: LOAD CELL AMP			
Size	Number	Rev	
A	960507-1		
Date	5-7-96	Drawn by ERK	
Filename	GEAZDE.PCB	Sheet	1 of 1

GENERAL INFORMATION		DATE		DRAWN BY	
PROJECT NO.	100-1000	DATE	5-7-96	DRAWN BY	ERK
PROJECT NAME	LOAD CELL AMP	CHECKED BY		DATE	
DESIGNED BY		DATE			
APPROVED BY					
DATE					
SCALE					
SHEET NO.	1	TOTAL SHEETS	1		
<p>NOTES: 1. ALL DIMENSIONS ARE IN INCHES UNLESS OTHERWISE SPECIFIED.</p> <p>2. ALL DIMENSIONS ARE TO CENTER UNLESS OTHERWISE SPECIFIED.</p> <p>3. ALL DIMENSIONS ARE TO CENTER UNLESS OTHERWISE SPECIFIED.</p>					



Carnegie Institution of Washington			
Title			
LOAD CELL AMP			
Size	Number	Rev	
A	960507-1		
Date	5-7-96	Drawn by ERK	
Filename	GEAZDE.PCB	Sheet 1 of 1	